

**STANDARDISED MEASUREMENT  
OF ALCOHOL RELATED TROUBLES  
SMART PROJECT  
EAHC GRANT AGREEMENT NO 2007308**

**WHO MEETING OF NATIONAL COUNTERPARTS  
FOR ALCOHOL POLICY IN THE WHO EUROPEAN  
REGION AND THE AMPHORA EXPERT MEETING  
MADRID 16 JUNE 2010**

# **SELECTED OBJECTIVES**

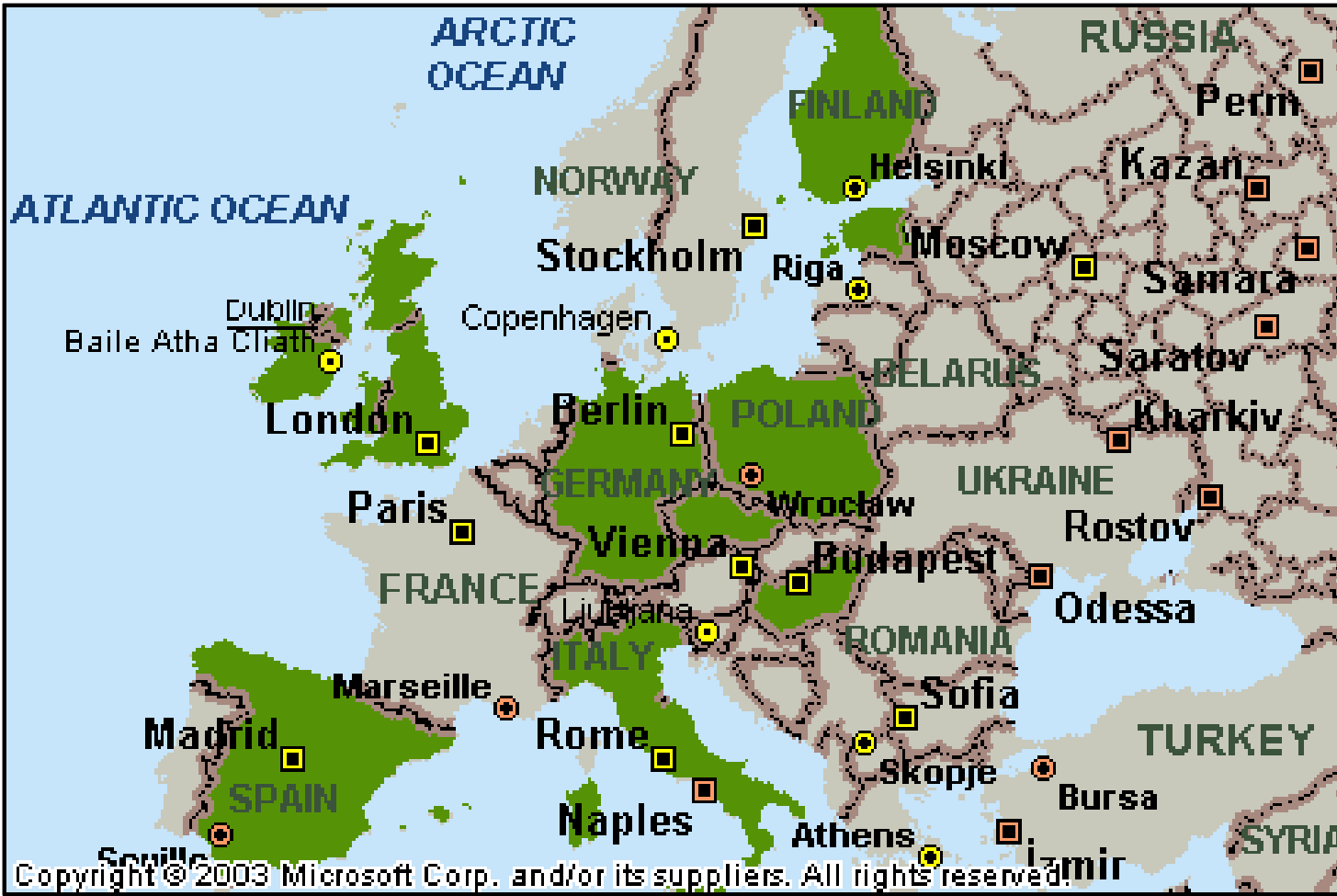
## **GENERAL OBJECTIVE**

- DEVELOP STANDARDIZED COMPARATIVE SURVEYS  
METHODOLOGY

## **SPECIFIC OBJECTIVES**

- TO SUMMARIZE EXISTING ALCOHOL SURVEY  
METHODOLOGIES
- TO DEVELOP STANDARDIZED COMPARATIVE SURVEY  
INSTRUMENT ON ALCOHOL USE, PATTERNS OF  
DRINKING AND RELATED PROBLEMS

# PARTICIPATING COUNTRIES



# **STANDARDISED SURVEY PROTOCOL**

## **TASKS**

- **METHODOLOGICAL LITERATURE REVIEW**
- **EU SURVEY REVIEW**
- **POLICY SUPPORT LITERATURE REVIEW**
- **STUDY PROTOCOL INCL. QUESTIONNAIRE**
- **PILOT STUDY**
- **FINAL STUDY PROTOCOL FOR STANDARDISED DRINKING SURVEYS**

# COUNTRIES COVERED BY SURVEYS REVIEW



# **EU SURVEY REVIEW**

## **MAJOR FINDINGS**

- **THE METHODOLOGIES OF SURVEYS DIFFER VERY MUCH FROM COUNTRY TO COUNTRY AND EVEN WITHIN COUNTRIES AS REGARDS:**
  - SAMPLING
  - AGE OF THE SAMPLE
  - SURVEY ADMINISTRATION
  - MEASURING ALCOHOL CONSUMPTION
  - MEASURING ALCOHOL PROBLEMS
- **THE MAIN REASONS FOR NO STANDARD APPROACH:**
  - DIFFERENT DRINKING PATTERNS
  - DIFFERENT RESEARCH TRADITIONS
  - DIFFERENT SOCIAL IMPORTANCE OF VARIOUS ASPECTS OF ALCOHOL CONSUMPTION AND PATTERNS OF ALCOHOL RELATED PROBLEMS
  - DIFFERENT RESEARCH POTENCY IN TERMS OF FUNDING, SKILLS, EXPERIENCES

# **PILOT QUESTIONNAIRE STRUCTURE**

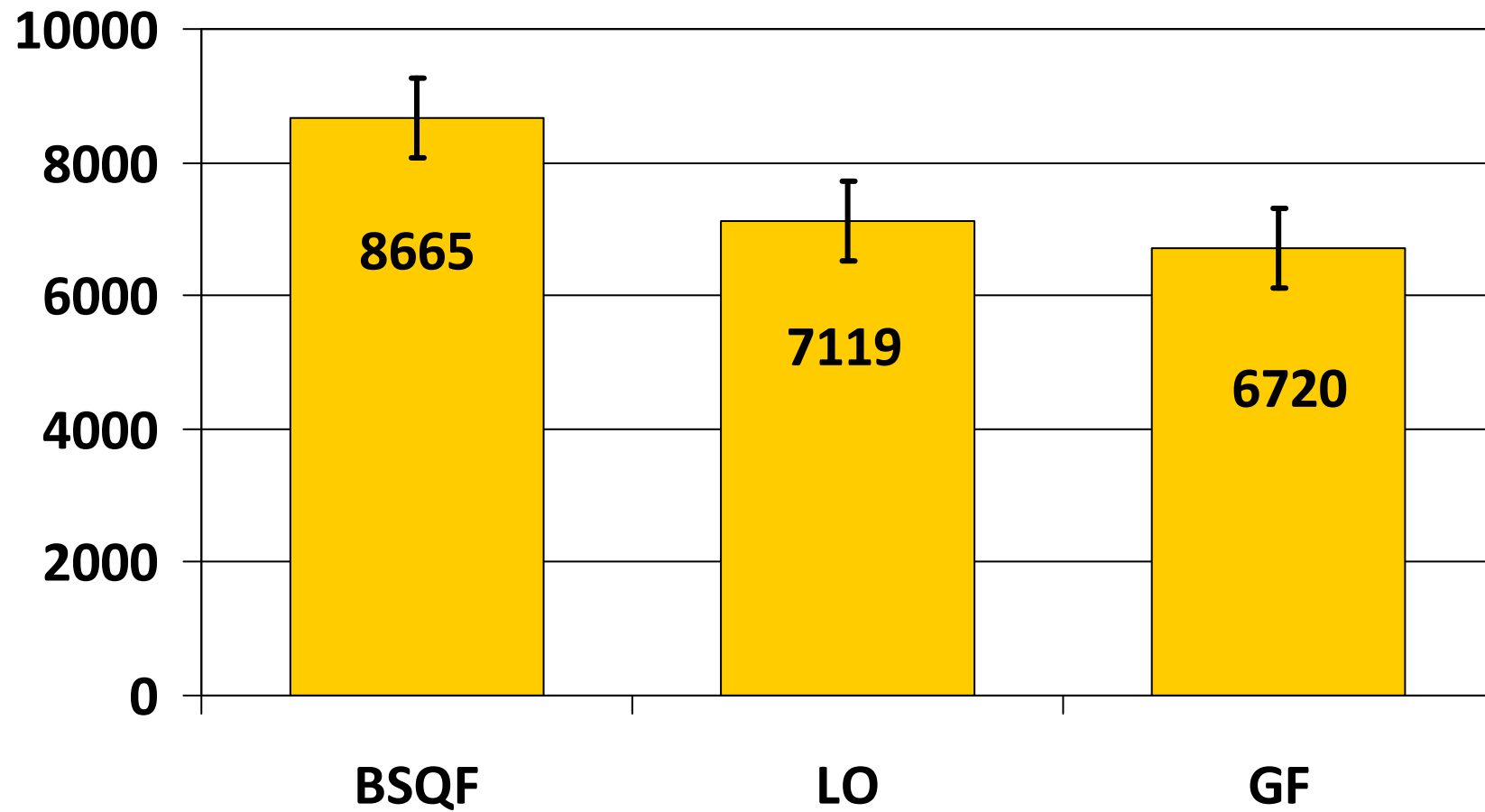
- **ALCOHOL CONSUMPTION – 3 METHODS (BSQF, GF, LO)**
- **DRUNKENNESS**
- **RISKY SINGLE OCCASION DRINKING OR BINGE DRINKING**
- **UNRECORDED PURCHASING**
- **ALCOHOL PROBLEMS – 3 SCREENING INSTRUMENTS (AUDIT, RAPS, DSM- IV)**
- **ADVERSE SOCIAL CONSEQUENCES OF OWN ALCOHOL USE**
- **HEAVY DRINKERS IN YOUR LIFE**
- **IMPACT OF OTHERS DRINKING IN THE COMMUNITY**
- **ATTITUDES TO ALCOHOL POLICY**
- **SOCIO-DEMOGRAPHICS**

# **PILOT STUDY**

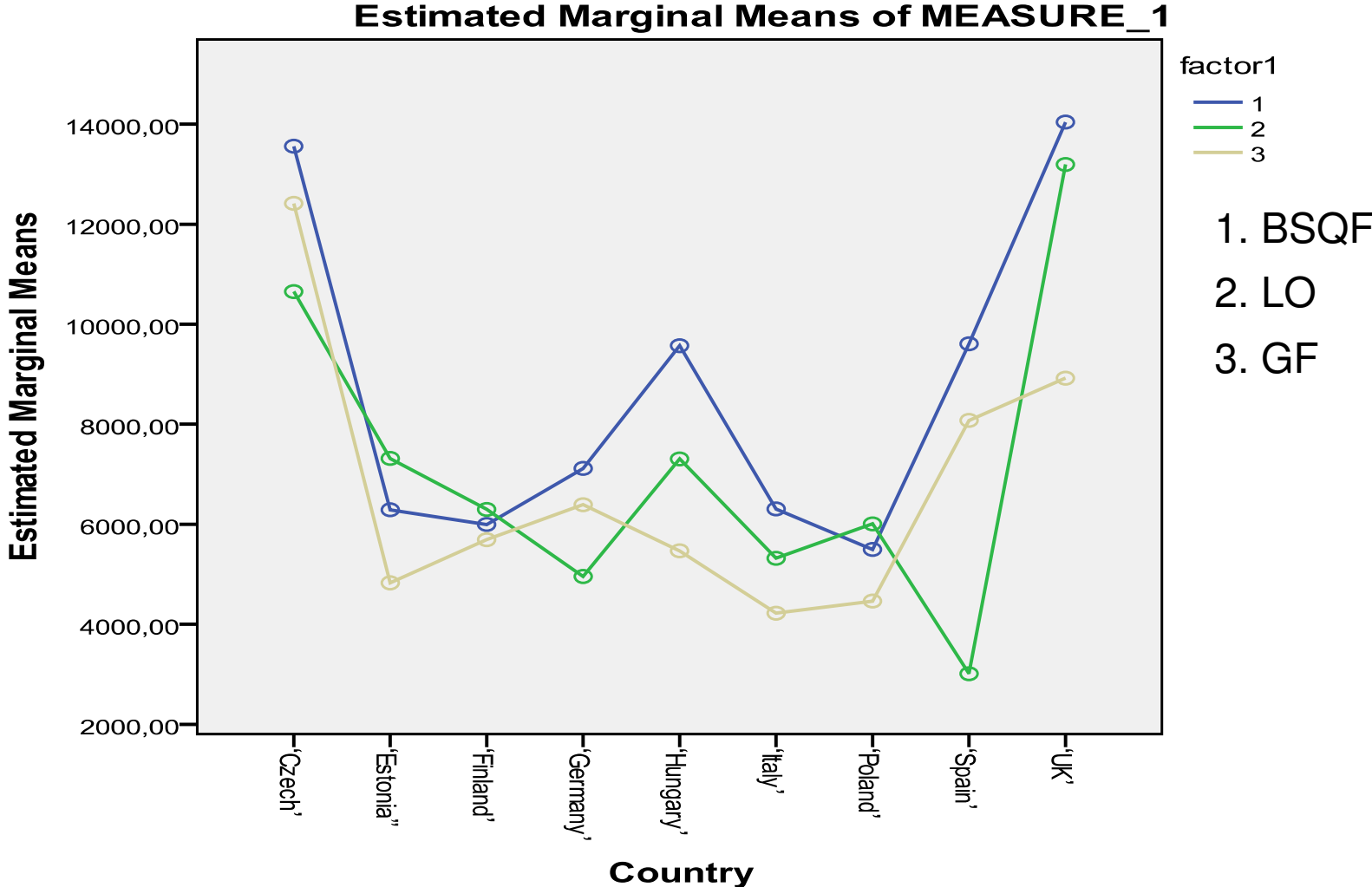
- **NINE COUNTRIES**
- **APPROX. 2000 INTERVIEWS**
- **QUALITATIVE ASSESSMENT**
- **FOCUS GROUPS**



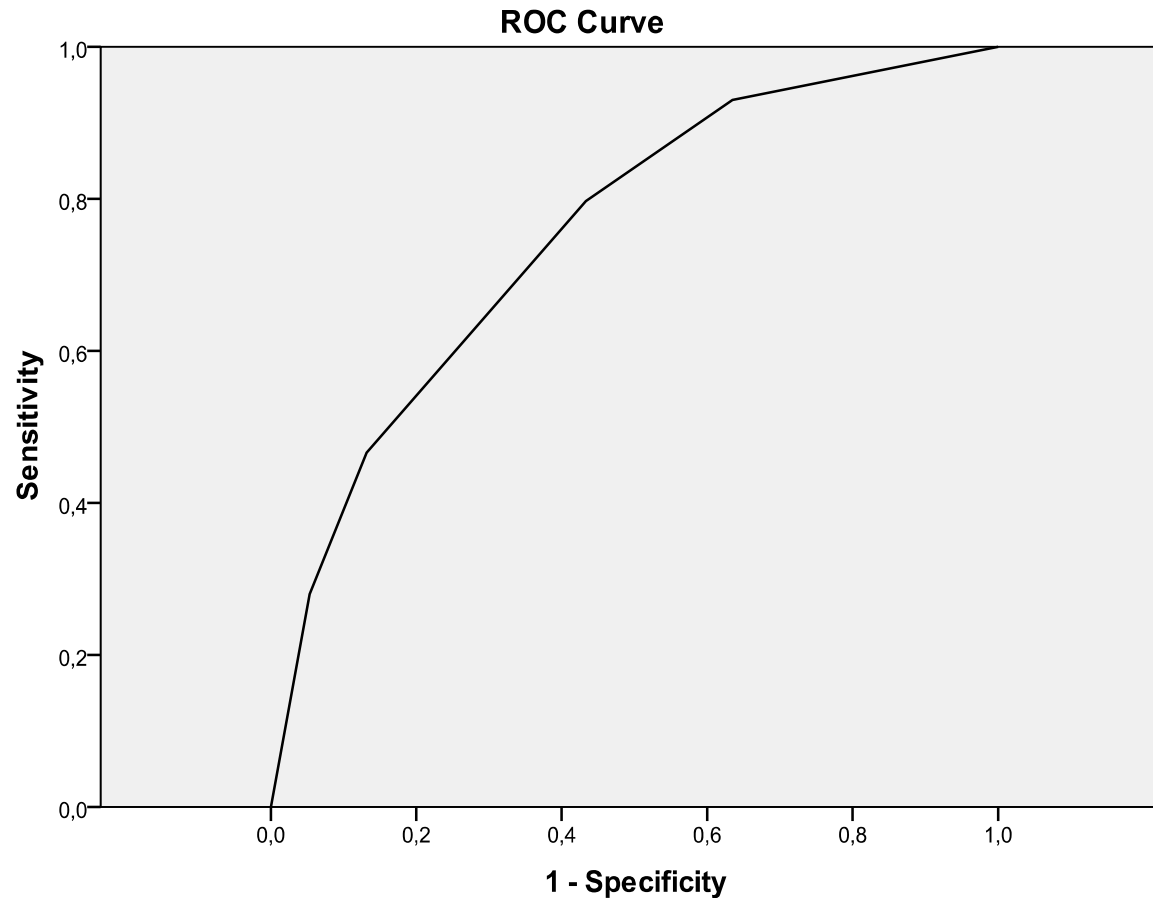
# ANNUAL CONSUMPTION MEASURES OVERALL MEANS IN MILLILITERS



# CONSUMPTION MEASURES MEANS BY COUNTRY (GRAPH)



# CONSUMPTION MEASURES PREDICTIVE QUALITIES



Diagonal segments are produced by ties.

## BSQF method by RAPS

### Area Under the Curve

Area – 0.754

Std. Error – 0.013

Significance – 0.000

Lower Bound – 0.727

Upper Bound – 0.780

# FINAL LIST OF COMMUNITY PROBLEMS AFTER FACTOR ANALYSIS

	1	2	3
<b>BEEN PHYSICALLY ABUSED</b>	0.855	-0.065	-0.022
<b>EXPERIENCED TROUBLE AT A LICENSED VENUE</b>	0.848	0.176	0.101
<b>BEEN KEPT AWAKEN AT NIGHT</b>	-0.073	0.843	0.044
<b>BEEN VERBALLY ABUSED</b>	-0.183	0.841	-0.020
<b>BEEN INVOLVED IN A TRAFFIC ACCIDENT</b>	-0.046	0.105	0.743
<b>FELT UNSAFE IN PUBLIC PLACES</b>	0.103	-0.077	0.693

# FINAL LIST OF POLICY SUPPORT ITEMS AFTER FACTOR ANALYSIS

	1	2	3
ADVERTISING OF ALCOHOL SHOULD BE RESTRICTED	0.610	0.253	-0.146
THE BLOOD ALCOHOL LIMIT FOR DRIVERS	0.163	0.832	-0.006
RANDOM BREATH TESTING	0.138	0.841	-0.043
NUMBER OF ALCOHOL OUTLETS SHOULD BE DECREASED	0.826	0.124	0.063
ALCOHOL TAXES SHOULD BE INCREASED	0.811	0.054	-0.070
ALCOHOL IS COMMODITY AS ANY OTHER	-0.428	-0.080	0.566
INDIVIDUALS ARE RESPONSIBLE ENOUGH	0.012	0.009	0.909
PUBLIC AUTHORITIES HAVE TO INTERVENE	0.562	0.118	-0.222

# **EUROPEAN CONFERENCE ALTERNATIVE DATES**

**30-31 AUGUST 2010**

**18-19 OCTOBER 2010**

**25-26 OCTOBER 2010**

**BARCELONA !!!**